

IOS Essentials

Essential Features every ISP should Consider

Version 3.0alpha

Background

Cisco.com

- **Presentation based on content from the Cisco ISP Essentials book**

Cisco Press ISBN 1-58705-041-2

www.ciscopress.com to buy it 😊

www.ispbook.com for updates

Overview

Cisco.com

- **IOS Software and Router Management**
- **General Features**
- **Routing Configuration Guidelines**
- **Securing the Router**
- **Securing the Network**

Which IOS version?

- **Platforms**
GSR, 10000 series, 7500 series, 7200 series
- **Recommended release is 12.0S train**
Current version is 12.0(23)S1
Available on CCO
- **Has all of latest ISP supported features**

Which IOS version?

- **Platforms**

5x00, 4500, 3600, 2600 and 2500 series

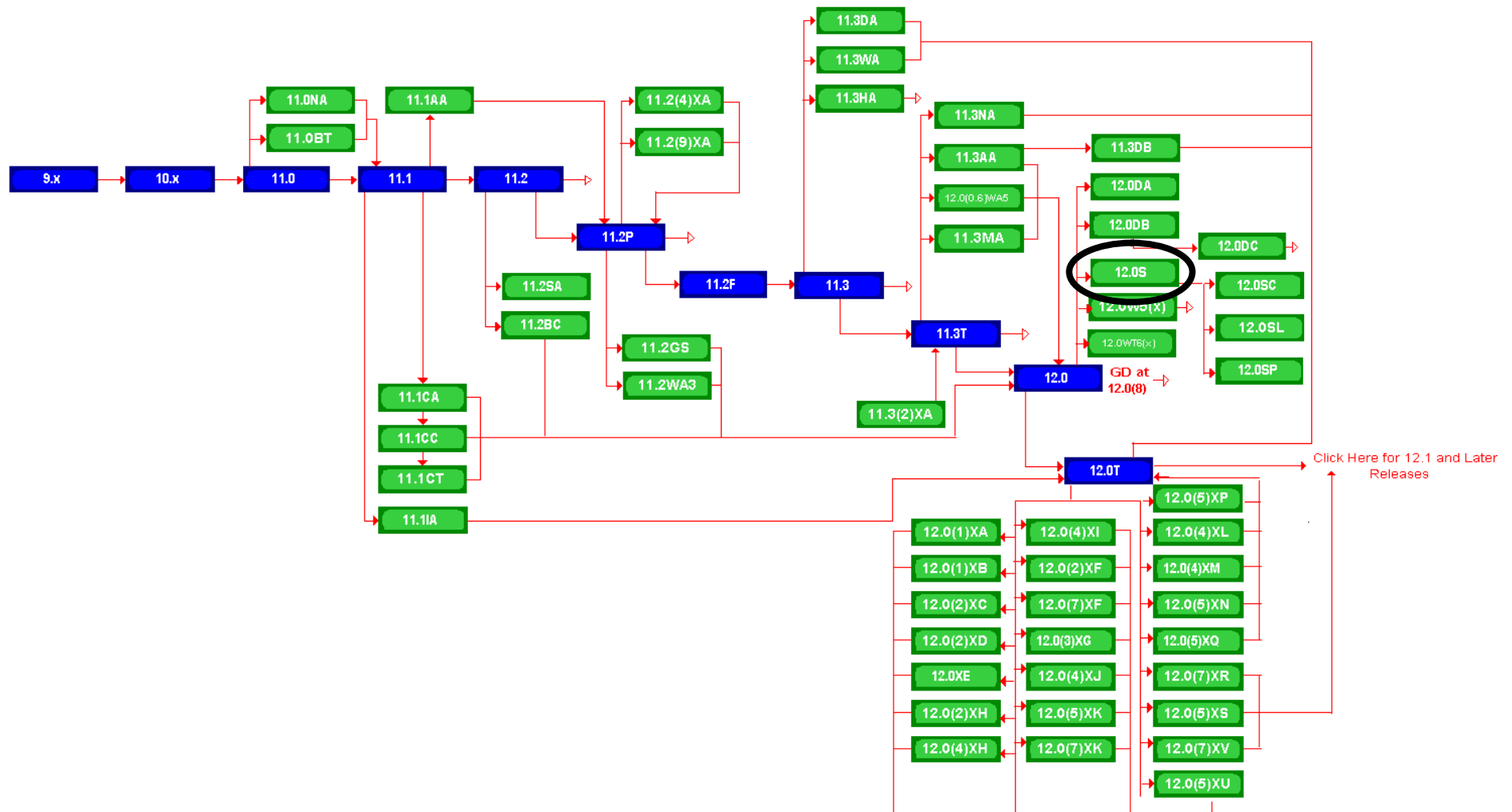
- **Recommended release is the 12.2 mainline train**

Current version is 12.2(13)

Has many of the features from 12.0S

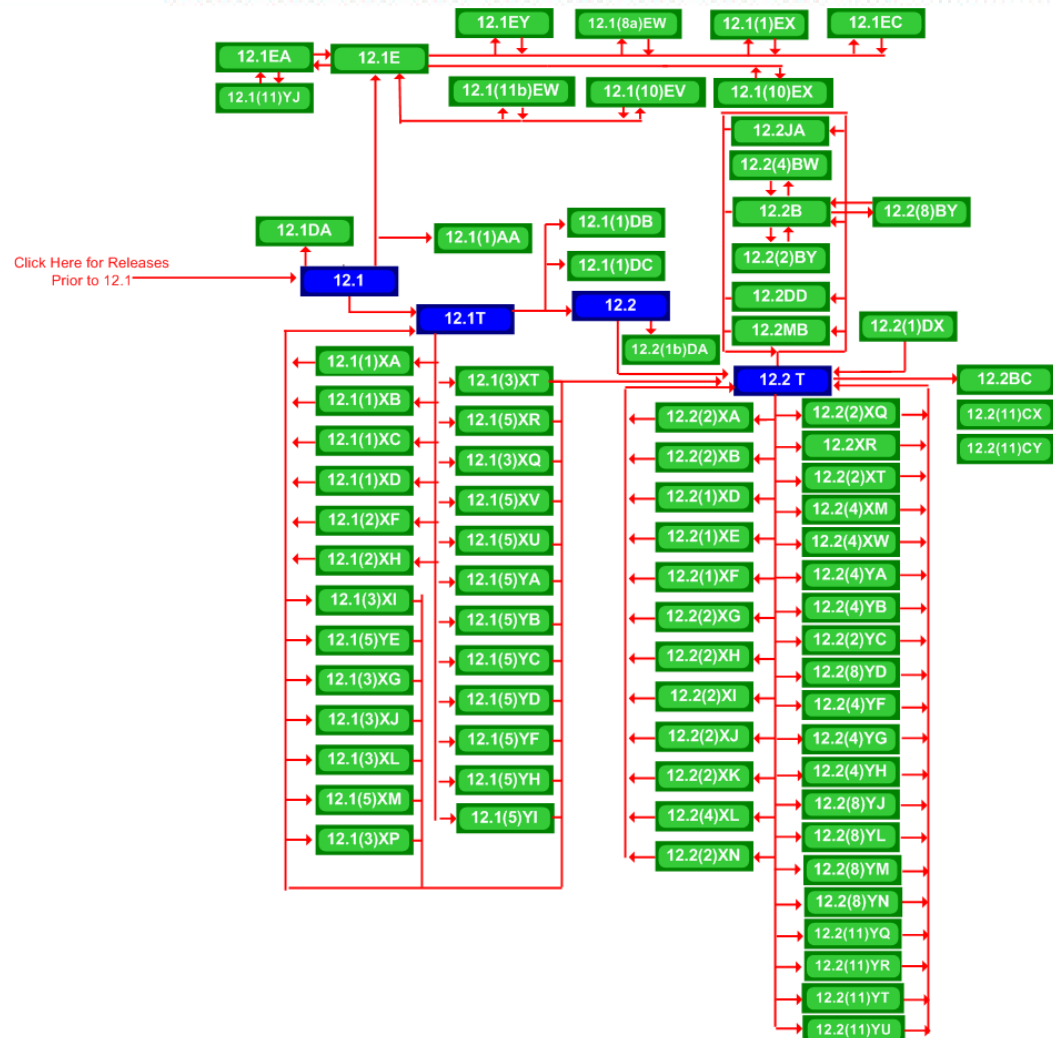
Available on CCO

Cisco IOS Roadmap



<http://www.cisco.com/warp/public/620/roadmap.shtml>

Cisco IOS Roadmap



http://www.cisco.com/warp/public/620/roadmap_b.shtml

IOS Software Management

Flash Memory

- **Good practice is to have at least two distinct flash memory volumes**
 - allows backup image(s)
 - back out path in case of upgrade problems
- **Partition the built-in flash**
 - `partition flash 2 16 16`
- **Install a PCMCIA flash card in external slot(s)**

IOS Software Management

Flash Memory

- **Ensure there is a configured back for the selected IOS image**

Backup image is previous good image

```
boot system flash slot0:rsp-k4pv-mz.120-23.S1
boot system flash slot1:rsp-k4pv-mz.120-21.S5
boot system flash
```

Which means:

Boot quoted image from slot0:. If it isn't there, boot the quoted image in slot1:. If that isn't there, try the first image available in flash

IOS Software Management

System Memory

- **Good practice is to maximise router memory**
 - allows for the rapidly growing Internet**
- **At least 128Mbytes RAM needed for full Internet routing table**
- **Recognised that equipment works best when “left alone”**

IOS Software Management

When to Upgrade

Cisco.com

- **Upgrades needed when:**
 - bug fixes released**
 - new hardware support**
 - new software features required**
- **Otherwise:**

If it isn't broken, don't fix it!

Configuration Management

- **Backup NVRAM configuration off the router:**
 - write configuration to TFTP server**
 - TFTP server files kept under revision control**
 - router configuration built from master database**
- **Allows rapid recovery in case of emergency**

Larger Configurations

- **Compress Configuration**

Used when configuration required is larger than configuration memory (NVRAM) available.

```
service compress-config
```

- **FLASH or remote server**

Used when NVRAM compression is not enough

Command Line Interface Features

Cisco.com

- **Some Convenient Editing Keys**

TAB	command completion
arrow keys	scroll history buffer
ctrl A	beginning of line
ctrl E	end of line
ctrl K	delete all chars to end of line
ctrl X	delete all chars to beginning of line
ctrl W	delete word to left of cursor
esc B	back one word
esc F	forward one word

Command Line Interface Features

Cisco.com

- **CLI now has string searches**

```
show configuration | [begin|include|exclude] <regexp>
```

- **Pager “--more--” now has string searches**

```
/<regexp>, -<regexp>, +<regexp>
```

- **“More” command has string searches**

```
more <filename> | [begin|include|exclude] <regexp>
```

Use detailed logging

- **Off load logging information to a logging server.**
- **Use the full detailed logging features to keep exact details of the activities.**

```
service timestamps debug datetime msec localtime show-timezone
service timestamps log datetime msec localtime show-timezone
no logging console
logging buffered 16384
logging trap debugging
logging facility local7
logging 169.223.32.1
logging 169.223.35.8
logging source-interface loopback0
```


Network Time Protocol

- **If you want to cross compare logs, you need to synchronize the time on all the devices.**

- **Use NTP**

from external time source

Upstream ISP, Internet, GPS, atomic clock

from internal time source

router can act as stratum 1 time source

Network Time Protocol

- **Set timezone**

```
clock timezone <name> [+/-hours [mins]]
```

- **Router as source**

```
ntp master 1
```

- **External time source (master)**

```
ntp server a.b.c.d
```

- **External time source (equivalent)**

```
ntp peer e.f.g.h
```

Network Time Protocol

- **Example Configuration:**

```
clock timezone SST 8
ntp update-calendar
ntp source loopback0
ntp server <other time source>
ntp peer <other time source>
ntp peer <other time source>
```

SNMP

- **Remove any SNMP commands if SNMP is not going to be used.**
- **If SNMP is going to be used:**

```
access-list 98 permit 169.223.1.1
access-list 98 deny any
snmp-server community 5nmc02m RO 98
snmp-server trap-source Loopback0
snmp-server trap-authentication
snmp-server host 169.223.1.1 5nmc02m
```

HTTP Server

- **HTTP Server in IOS from 11.1CC and 12.0S**
router configuration via web interface

- **Disable if not going to be used:**

```
no ip http server
```

- **Configure securely if going to be used:**

```
ip http server
```

```
ip http port 8765
```

```
ip http authentication aaa
```

```
ip http access-class <1-99>
```

Core Dumps

- **Cisco routers have a *core dump* feature that will allow ISPs to transfer a copy of the core dump to a specific FTP server.**
- **Set up a FTP account on the server the router will send the core dump to.**
- **The server should NOT be a public server**
 - use filters and secure accounts**
 - locate in NOC with network operations staff**
 - access only**

Core Dumps

- **Example configuration:**

```
ip ftp username cisco
```

```
ip ftp password 7 045802150C2E
```

```
ip ftp source-interface loopback 0
```

```
exception protocol ftp
```

```
exception dump 169.223.32.1
```

General Features

Interface Configuration

- **“ip unnumbered”**
 - no need for an IP address on point-to-point links**
 - keeps IGP small**
- **“description”**
 - customer name, circuit id, cable number, etc**
 - on-line documentation!**
- **“bandwidth”**
 - used by IGP**
 - documentation!**

Interface Configuration – Example

- **ISP router**

```
!  
interface loopback 0  
description Loopback interface on GW2 Router  
ip address 215.17.3.1 255.255.255.255  
!  
interface Serial 5/0  
description 128K HDLC link to Galaxy  
Publications Ltd [galpub1] WT50314E R5-0  
bandwidth 128  
ip unnumbered loopback 0  
!  
ip route 215.34.10.0 255.255.252.0 Serial 5/0
```

- **Customer router**

```
!  
interface Ethernet 0  
description Galaxy Publications LAN  
ip address 215.34.10.1 255.255.252.0  
!  
interface Serial 0  
description 128K HDLC link to Galaxy  
Internet Inc WT50314E C0  
bandwidth 128  
ip unnumbered ethernet 0  
!  
ip route 0.0.0.0 0.0.0.0 Serial 0
```

Interface Status Checking

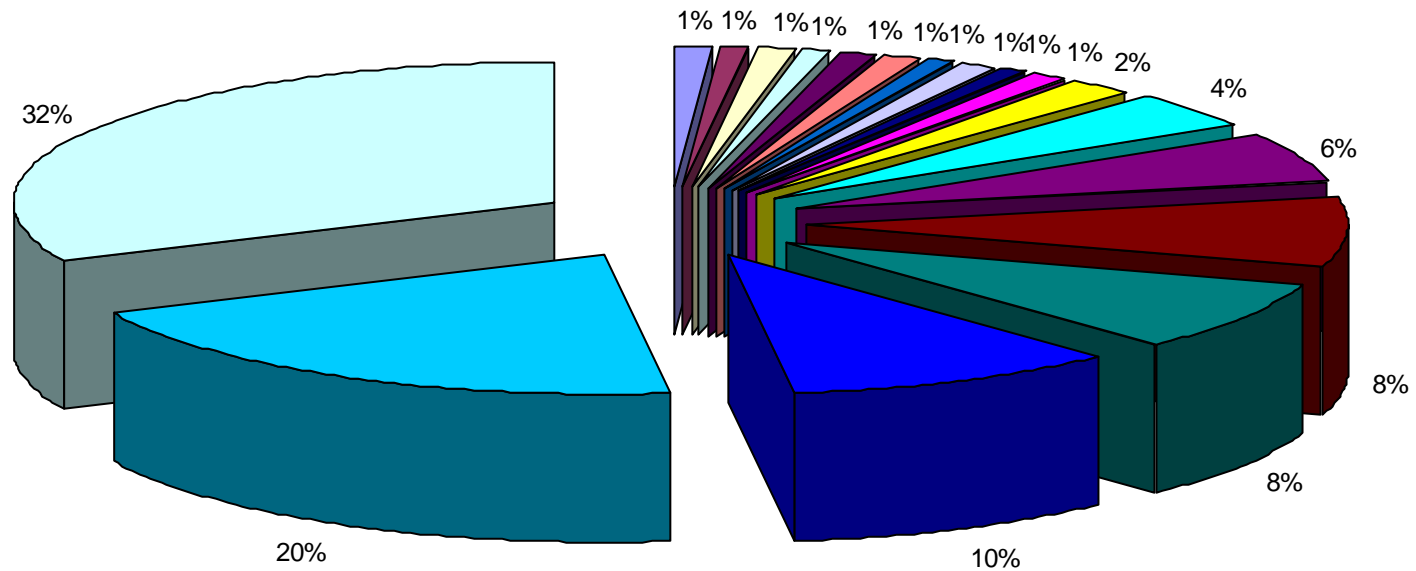
- **show interface switching**
Hidden command which provides information about the switching status of the router interfaces
- **show interface stats**
Hidden command which provides inbound and outbound packet information on the router interfaces
- **show idb (interface descriptor blocks)**
Shows how many IDBs are configured on the router
Early routers (such as AGS+) could only support 300 IDBs

NetFlow

- **Provides network administrators with “packet flow” information**
- **Allows:**
 - security monitoring**
 - network management and planning**
 - customer billing**
 - traffic flow analysis**
- **Available from 11.1CC for 7x00 and 12.0 for remaining router platforms**

NetFlow – Capacity Planning

Public Routers 1 , 2, 3 Month of September Outbound Traffic



■ WEC	■ WebTV	■ ABSNET	■ AOL	■ Compuserve
■ SURAnet	■ IBM	■ OARNet	■ NIH	■ PacBell Internet Service
■ JHU	■ C&W	■ UMD	■ AT&T	■ BBN
■ Erols	■ Digex	■ Other		

NetFlow

- **Configuration example:**

```
interface serial 5/0
```

```
ip route-cache flow
```

- **If CEF not configured, NetFlow enhances existing switching path**
- **If CEF configured, NetFlow becomes a flow information gatherer**

- **Information export:**

router to collector system

```
ip flow-export version 5 [origin-as|peer-as]  
ip flow-export destination x.x.x.x <udp-port>
```

- **Flow aggregation (new in 12.0S):**

router sends aggregate records to collector system

```
ip flow-aggregation cache as|prefix|dest|source|proto  
enabled  
export destination x.x.x.x <udp-port>
```

NetFlow

- **Sample Output on router:**

```
Beta-7200-2>sh ip cache flow
```

```
IP packet size distribution (17093 total packets):
```

```
  1-32   64   96  128  160  192  224  256  288  320  352  384  416  448  480
  .000 .735 .088 .054 .000 .000 .008 .046 .054 .000 .009 .000 .000 .000 .000

  512   544   576 1024 1536 2048 2560 3072 3584 4096 4608
  .000 .000 .000 .000 .000 .000 .000 .000 .000 .000 .000
```

```
IP Flow Switching Cache, 1257536 bytes
```

```
  3 active, 15549 inactive, 12992 added
```

```
 210043 ager polls, 0 flow alloc failures
```

```
last clearing of statistics never
```

Protocol	Total	Flows	Packets	Bytes	Packets	Active(Sec)	Idle(Sec)
-----	Flows	/Sec	/Flow	/Pkt	/Sec	/Flow	/Flow
TCP-Telnet	35	0.0	80	41	0.0	14.5	12.7
UDP-DNS	20	0.0	1	67	0.0	0.0	15.3
UDP-NTP	1223	0.0	1	76	0.0	0.0	15.5
UDP-other	11709	0.0	1	87	0.0	0.1	15.5
ICMP	2	0.0	1	56	0.0	0.0	15.2
Total:	12989	0.0	1	78	0.0	0.1	15.4

SrcIf	SrcIPAddress	DstIf	DstIPAddress	Pr	SrcP	DstP	Pkts
Et1/1	144.254.153.10	Null	144.254.153.127	11	008A	008A	1
Et1/1	144.254.153.112	Null	255.255.255.255	11	0208	0208	1
Et1/1	144.254.153.50	Local	144.254.153.51	06	701D	0017	63

Using DNS

- **Map names to addresses**
- **Descriptive names**

```
ip domain-name
```

```
ip name-server
```

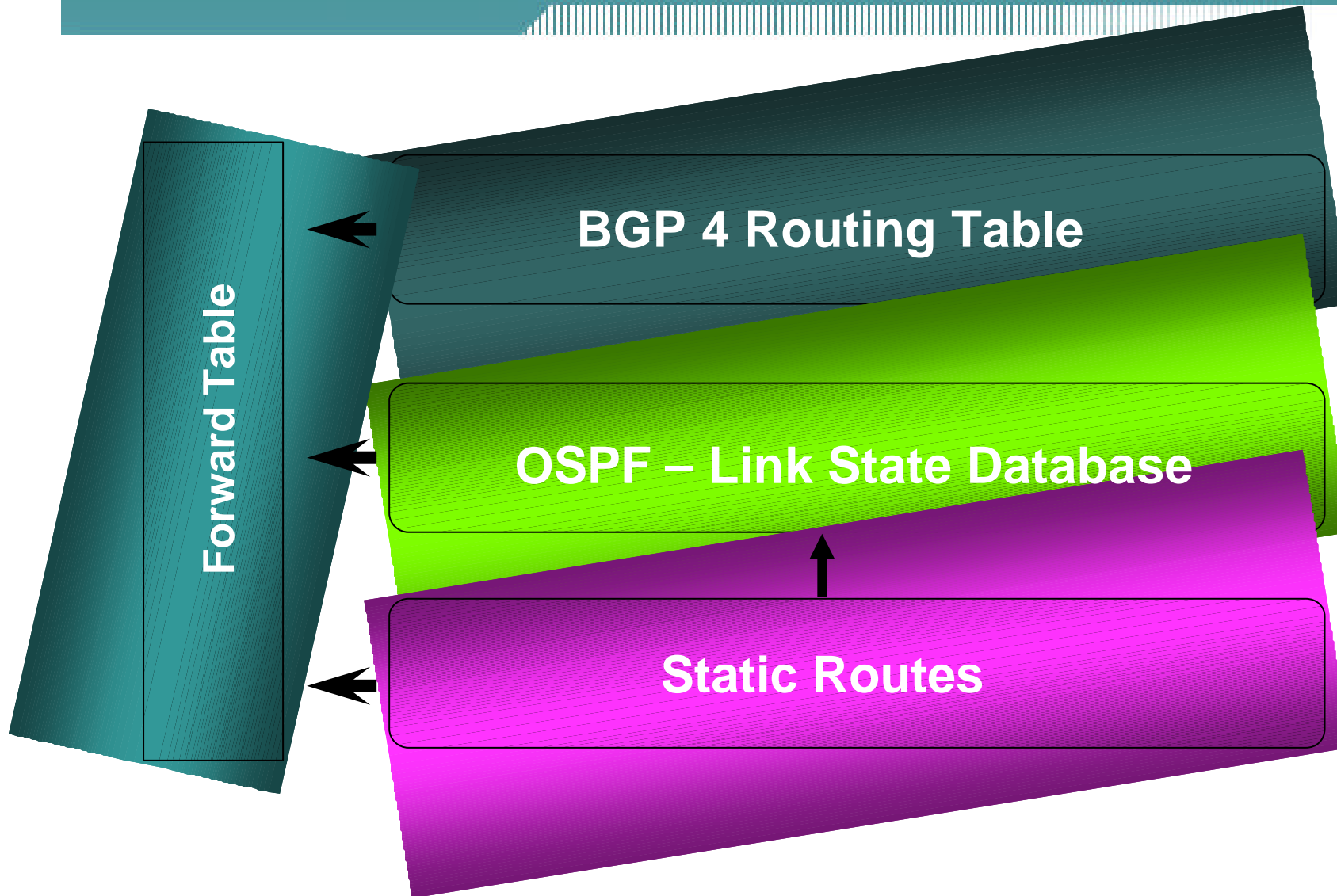
- **Sample trace through network:**

```
4:Received echo from sj-wall-2.cisco.com [198.92.1.138] in 440 msec
5:Received echo from barrnet-gw.cisco.com [192.31.7.37] in 335 msec
6:Received echo from paloalto-cr1.bbnplanet.net [131.119.26.9] in 335 msec
7:Received echo from paloalto-br2.bbnplanet.net [131.119.0.194] in 327 msec
8:Received echo from core6-hssi6-0.SanFrancisco.mci.net [206.157.77.21] in 468 msec
9:Received echo from bordercore1-loopback.Washington.mci.net[166.48.36.1] in 454 msec
10:Received 48 bytes from www.getit.org [199.233.200.55] in 466 msec
```

Routing

Routing Tables Feed the Forwarding Table

Cisco.com



HSRP

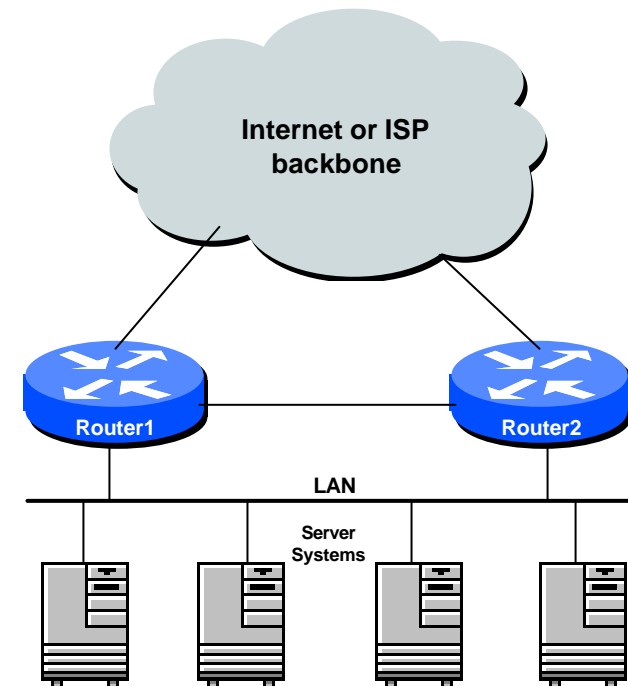
- **Hot Standby Routing Protocol**
virtual default gateway for dumb system LAN
transparent cut-over in case of failure

Router1:

```
interface ethernet 0/0
description Service LAN
ip address 169.223.10.1 255.255.255.0
standby 10 ip 169.223.10.254
```

Router2:

```
interface ethernet 0/0
description Service LAN
ip address 169.223.10.2 255.255.255.0
standby 10 priority 150
standby 10 preempt
standby 10 ip 169.223.10.254
```



CIDR Features

- The Internet is a **classless** world. All routers connect to the Internet must be CIDR compliant, else there will be problems with the network connection to the Internet.
- All Cisco routers should have the following commands configured for CIDR:

```
ip subnet-zero  
ip classless
```
- These are default from IOS 12.0 onwards

Selective Packet Discard

- **When a link goes to a saturated state, you will drop packets. The problem is that you will drop any type of packets – Including your routing protocols.**
- **Selective Packet Discard (SPD) will attempt to drop non-routing packets instead of routing packets when the link is overloaded.**

```
ip spd enable
```

- **Enabled by default from 11.2(5)P and later releases, available option in 11.1CA/CC.**

Source Routing

- **IP has provision to allow source IP host to specify route through Internet**
- **ISPs should turn this off, unless it is specifically required:**

```
no ip source-route
```

BGP

- **There are key BGP features that should be configured by ISPs:**

`update-source loopback 0 (for iBGP)`

`no synchronization`

`no auto-summary`

`ip bgp-community new-format`

`bgp neighbor shutdown`

BGP Route Refresh Capability

`bgp dampening`

- **More helpful features:**

```
bgp deterministic-med
```

```
bgp neighbor remove-private-AS
```

```
bgp neighbor authentication
```

```
bgp neighbor maximum-prefix
```

```
bgp neighbor maxas-limit
```

```
bgp log-neighbor-changes
```

```
no bgp fast-external-fallover
```

```
bgp peer-groups
```

```
ip prefix-lists
```

iBGP configuration

- **Use loopback interface**

it never goes away

routers have multiple external paths

has multiple uses

```
interface loopback 0
  ip address 215.17.1.34 255.255.255.255
router bgp 200
  neighbor 215.17.1.35 remote-as 200
  neighbor update-source loopback 0
  neighbor 215.17.1.36 remote-as 200
  neighbor update-source loopback 0
```

BGP Synchronization

- **By default BGP does not advertise a route before all routers in the AS have learned it via an IGP**

i.e., if the prefix isn't in the IGP, BGP won't announce it

- **Synchronization should be disabled in every ISP network**

ISPs use iBGP across backbone, IGP simply provides internal reachability

`no synchronization`

BGP Auto Summarisation

- **Automatically summarises subprefixes to the classful network when redistributed to BGP from another routing protocol**
- **Must be turned off for any Internet connected site using BGP.**
- **Internet is classless – class A, class B and class C are no more.**

`no auto-summary`

BGP Community Format

- **Communities are used extensively**
- **Cisco IOS supports two formats**
 - One 32 bit integer e.g. 13107210
 - Two 16 bit integers e.g. 200:10
- **RFC1998 recommends 16:16 format**
Format AS:xxxx

```
ip bgp-community new-format
```

Route Refresh Capability

- Facilitates non-disruptive policy changes
- No configuration is needed
- No additional memory is used
- Requires peering routers to support “route refresh capability” – RFC2918
- **clear ip bgp x.x.x.x in** tells peer to resend full BGP announcement
- **clear ip bgp x.x.x.x out** resends full BGP announcement to peer

Route Refresh Capability

- **Use Route Refresh capability if supported**
find out from “show ip bgp neighbor”
Non-disruptive, “Good For the Internet”
- **Otherwise use Soft Reconfiguration IOS feature**
`neighbor x.x.x.x soft-reconfiguration in`
- **Only hard-reset a BGP peering as a last resort**
Consider the impact to be equivalent to a router reboot

Managing Policy Changes

- Ability to clear the BGP sessions of groups of neighbours configured according to several criteria

- `clear ip bgp <addr> [soft] [in|out]`

<addr> may be any of the following

x.x.x.x

IP address of a peer

all peers

ASN

all peers in an AS

external

all external peers

peer-group <name>

all peers in a peer-group

Clear BGP Sessions per AS

- Ability to clear the BGP sessions of all the neighbors configured with a specific AS number

- Syntax:

clear ip bgp <as number>

- Availability since **11.1(14)CA,
11.1CC, 11.2(9),
11.3(2)**

BGP Neighbour Shutdown

- **Shutdown BGP peering**
previously required operator to delete configuration
now can simply “shutdown” the peering

- **Configuration example:**

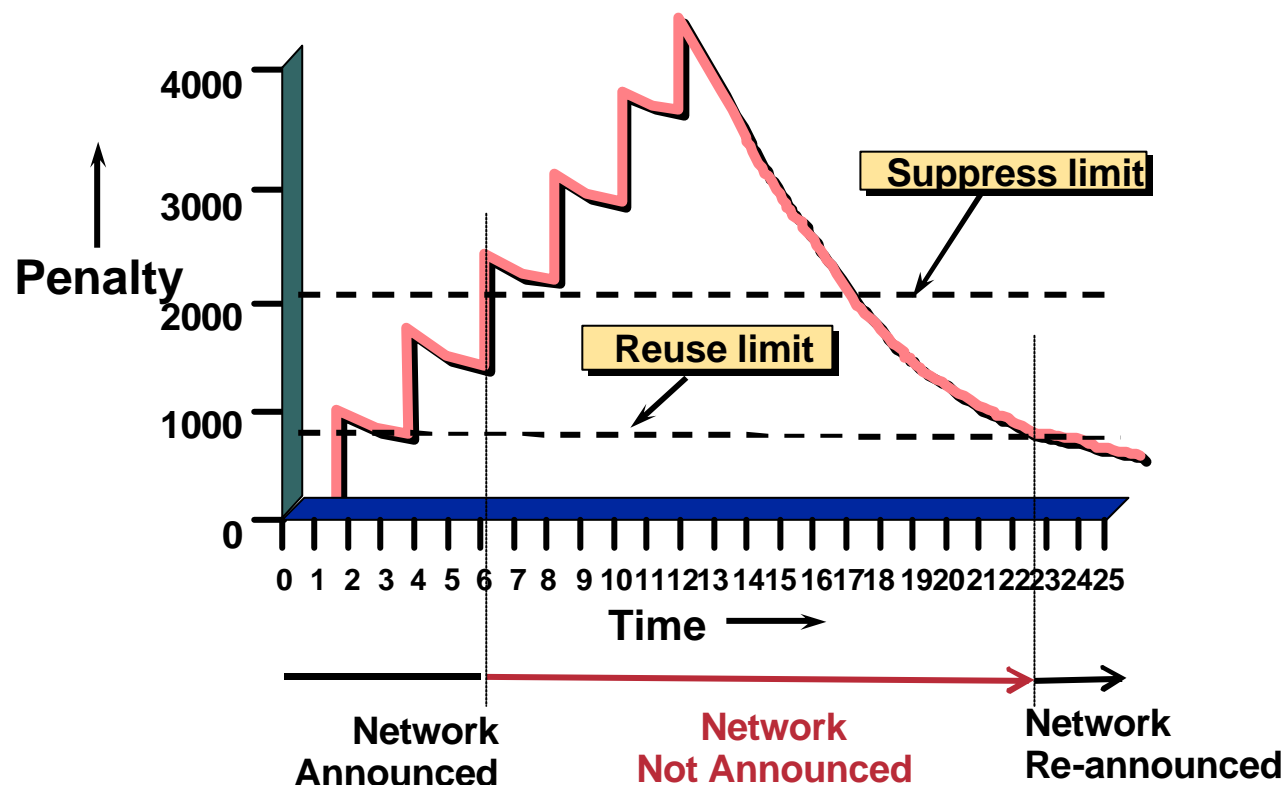
```
router bgp 200
  neighbor 215.7.1.1 remote-as 210
  neighbor 215.7.1.1 shutdown
```

- **Can be reactivated with**

```
no neighbor 215.7.1.1 shutdown
```

BGP Damping

- Route flap damping to minimise instability in local network and Internet



BGP Damping

- **Recommended values and sample configurations for ISPs at:**

<http://www.ripe.net/docs/ripe-229.html>

- **Example techniques:**

**Internet Routing Architectures 2nd Edition – Sam Halabi
& Danny McPherson**

`bgp dampening`

Deterministic MED

- **RFC1771 says that MED is not always compared**
- **As a result, the ordering of the paths can effect the decision process**
- **By default in Cisco IOS, the prefixes are compared in order of arrival (most recent to oldest)**

Use `bgp deterministic-med` to order paths consistently

The bestpath is recalculated as soon as the command is entered

Enable in all the routers in the AS

Deterministic MED—Operation

- **The paths are ordered by Neighbour AS**
- **The bestpath for each Neighbour AS group is selected**
- **The overall bestpath results from comparing the winners from each group**
- **The bestpath will be consistent because paths will be placed in a deterministic order**

Private-AS Removal

- **Private ASes range from 64512 to 65534**
Used for internal policy – must not appear on Internet
- **neighbor x.x.x.x remove-private-AS**
- **Rules:**
 - available for eBGP neighbors only
 - if the update has AS_PATH made up of private-AS numbers, the private-AS will be dropped
 - if the AS_PATH includes private and public AS numbers, private AS number will not be removed...it is a configuration error!
 - if AS_PATH contains the AS number of the eBGP neighbor, the private-AS numbers will not be removed
 - if used with confederations, it will work as long as the private AS numbers are after the confederation portion of the AS_PATH

BGP Neighbour Authentication

- **MD5 authentication between two peers**
password must be known to both peers
- **peer-group** can be used to apply to multiple peerings

```
neighbor 169.222.10.1 password v61ne0qkel133&
```


BGP Maximum Prefix Tracking

Cisco.com

- **Allow configuration of the maximum number of prefixes a BGP router will receive from a peer**
- **Two level control**
 - Warning threshold: log warning message**
 - Maximum: tear down the BGP peering, manual intervention required to restart**

BGP Maximum Prefix Tracking

Cisco.com

```
neighbor <x.x.x.x> maximum-prefix <max>  
  [<threshold>] [warning-only]
```

- **Threshold is an optional parameter between 1 to 100 percent**

Specify the percentage of <max> that a warning message will be generated. Default is 75%.

- **Warning-only is an optional keyword which allows log messages to be generated but peering session will not be torn down**

BGP Maximum AS Path Length

- **IOS can limit the maximum AS Path length acceptable by the router's BGP process**

```
neighbor x.x.x.x maxas-limit 15
```

Discards all prefixes with AS-PATH length greater than 15 prefixes

Easier and less prone to error than using a filter-list

BGP log-neighbor-changes

- Log neighbour up/down events, and the reason for the last neighbour peering reset
- Available from 11.1 CC and 12.0 releases
- Syntax (router subcommand):
 [no] log-neighbor-changes
- Typical log messages:
 %BGP-6-ADJCHANGE: neighbor x.x.x.x Up
 %BGP-6-RESET: neighbor x.x.x.x reset
 (User reset request)

Reason for Last Peer Reset

- Router keeps reason for the last BGP peer reset for each of its peers. Useful for analysing BGP session resets
- Available as part of the **show ip bgp neighbor** command output
- Accessible through SNMP
- Has been available since 11.1CC, 11.2(12) and 11.3(2)

BGP Peering

- **By default, peerings are reset immediately the line protocol to an external neighbour goes down**

bad for high latency, unreliable, long distance, or congested links

- **IOS option to disable this**

recommended in RIPE-229

uses standard keepalive/hold timers (60s/180s)

`no bgp fast-external-fallover`

BGP peer groups

- **Reduces CPU load and memory update generation processed once BGP configuration simplified**

```
router bgp 109
  neighbor internal peer-group
  neighbor internal remote-as 109
  neighbor internal update-source loopback 0
  neighbor 131.108.10.1 peer-group internal
  neighbor 131.108.20.1 peer-group internal
```

Prefix Lists

- **High performing access-list**
- **Faster loading of large lists**
- **Incremental configuration**
sequence numbers optional
`no ip prefix-list sequence-number`
- **Available from 11.1(17)CC and 12.0**
- **Configured by:**
`ip prefix-list <list-name>`

Prefix-list Command

```
[no] ip prefix-list <list-name> [seq <seq-value>] deny |  
    permit <network>/<len> [ge <ge-value>] [le <le-value>]
```

<network>/<len>: The prefix and its length

ge <ge-value>: "greater than or equal to"

le <le-value>: "less than or equal to"

Both "ge" and "le" are optional. Used to specify the range of the prefix length to be matched for prefixes that are more specific than <network>/<len>

Prefix Lists – Examples

- **Deny default route**

```
ip prefix-list EG deny 0.0.0.0/0
```

- **Permit the prefix 35.0.0.0/8**

```
ip prefix-list EG permit 35.0.0.0/8
```

- **In 192/8 allow up to /24**

```
ip prefix-list EG permit 192.0.0.0/8 le 24
```

- **In 192/8 deny /25 and above**

```
ip prefix-list EG deny 192.0.0.0/8 ge 25
```

- **Permit all**

```
ip prefix-list EG permit 0.0.0.0/0 le 32
```

Prefix Lists in BGP

- **Prefix-list should be used as an alternative to distribute-list**

```
router bgp 200
```

```
neighbor 169.222.1.1 remote-as 200
```

```
neighbor 169.222.1.1 prefix-list FILTER-IN in
```

```
neighbor 169.222.1.1 prefix-list FILTER-OUT out
```

- **Prefix-lists and access-lists are mutually exclusive**

Prefix-list route-map command

```
route-map <name> permit|deny <seq-num>  
  match ip address prefix-list <name> [<name> ...]
```

- **Used for route filtering, originating default, and redistribution in other routing protocols as well**
- **Not for packet filtering**

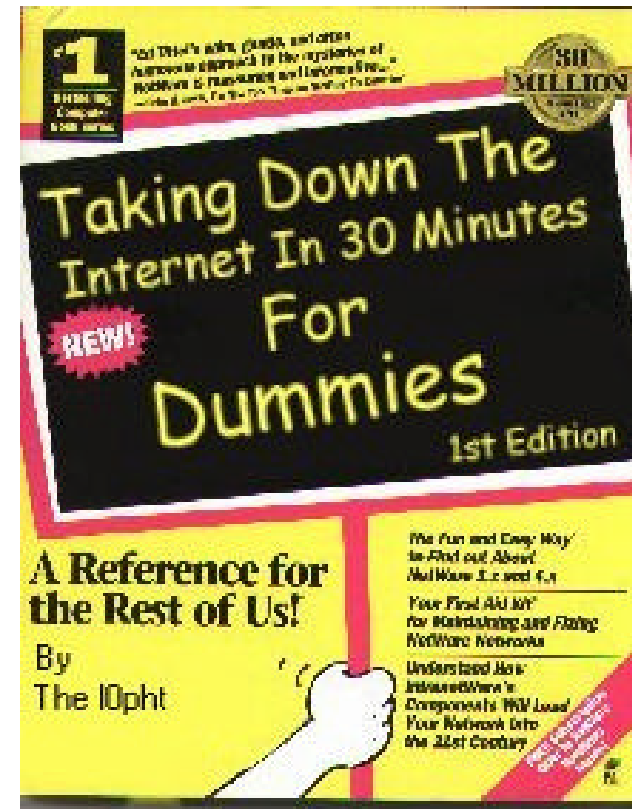
Prefix-List ORF

- **Outbound Route Filter Capability when using prefix-lists**
new from 12.0(5)S release
- **If remote BGP peer supports ORF capability, local BGP router can send inbound prefix-list to remote router**
- **Remote router installs received prefix-list in addition to its own outbound filters**
- **Reduces unwanted routing updates from peers**

Securing the Router

ISP Security

- **ISPs need to:**
 - Protect themselves**
 - Help protect their customers from the Internet**
 - Protect the Internet from their customers**



ISP Security

Cisco.com

- **Where to start**

Cisco Internet Security Advisories

www.cisco.com/warp/public/707/advisory.html

Cisco IOS documentation

www.cisco.com/univercd/cc/td/doc/product/software/ios122/122cgcr/fsecur_c/

RFC2196 (Site Security Handbook)

Networker's Security Sessions

Global Services You Turn OFF

- **Some services turned on by default, should be turned off to save memory and prevent security breaches/attacks**

`no service finger (before 12.0)`

`no ip finger (from 12.0)`

`no service pad`

`no service udp-small-servers`

`no service tcp-small-servers`

`no ip bootp server`

Interface Services You Turn OFF

- **Some IP features are great for Campus LANs, but do not make sense on a ISP backbone.**
- **All interfaces on an ISP's backbone router should have the follow as a *default*:**

```
no ip redirects
```

```
no ip directed-broadcast (default from 12.0)
```

```
no ip proxy-arp
```

Cisco Discovery Protocol

- Lets network administrators discover neighbouring Cisco equipment, model numbers and software versions
- Should not be needed on ISP network
 - `no cdp run`
- Should not be activated on any public facing interface: IXP, customer, upstream ISP
- Disable per interface
 - `no cdp enable`

Login Banner

- **Use a good login banner, or nothing at all:**

```
banner login ^
```

```
  Authorised access only
```

```
  This system is the property of Galactic Internet
```

```
  Disconnect IMMEDIATELY if you are not an authorised user!
```

```
  Contact noc@net.galaxy +99 876 543210 for help.
```

```
^
```

Exec Banner

- **Useful to remind logged in users of local conditions:**

```
banner exec ^
```

```
PLEASE NOTE - THIS ROUTER SHOULD NOT HAVE A DEFAULT ROUTE!
```

```
It is used to connect paying peers. These 'customers' should  
not be able to default to us. The config for this router is  
NON-STANDARD.
```

```
Contact Network Engineering +99 876 543234 for more info.
```

```
^
```

Use Enable Secret

- Encryption '7' on a Cisco is reversible.
- The “enable secret” password encrypted via a one-way algorithm.

```
enable secret <removed>
```

```
no enable password
```

```
service password-encryption
```

Turn on Nagle

- **Telnet was designed to do one character, one packet dialog.**
- **John Nagle's algorithm (RFC 896) helps alleviate the small-packet problem in TCP.**

`service nagle`

ident Feature

- **Identification (*ident*) support allows you to query a Transmission Control Protocol (TCP) port for identification.**
- **This feature enables an insecure protocol, described in RFC 1413, to report the identity of a client initiating a TCP connection and a host responding to the connection. No attempt is made to protect against unauthorized queries.**

```
ip ident
```


VTY and Console port timeouts

- **Default idle timeout on async ports is 10 minutes 0 seconds**

```
exec-timeout 10 0
```

- **Timeout of 0 means permanent connection**
- **TCP keepalives on incoming network connections**

```
service tcp-keepalives-in
```

VTY security

- **Access to VTYs should be controlled, not left open. Consoles should be used for last resort admin only:**

```
access-list 3 permit 215.17.1.0 0.0.0.255
access-list 3 deny any
line vty 0 4
  access-class 3 in
  exec-timeout 5 0
  transport input telnet
  transport output none
  transport preferred none
  password 7 045802150C2E
```

VTY Access and SSH

- **Secure Shell Supported as from IOS 12.0S**
- **Obtain, load and run appropriate crypto images on router**
- **Set up SSH on router**

```
Beta7200(config)#crypto key generate rsa
```

- **Add it as input transport**

```
line vty 0 4
  transport input telnet ssh
```

User Authentication – take 1

- **Account per user, with passwords**

```
aaa new-model
aaa authentication login neteng local
username joe password 7 1104181051B1
username jim password 7 0317B21895FE
line vty 0 4
  login neteng
  access-class 3 in
```

User Authentication – take 2

- **More recent versions of IOS add MD5 encryption for user passwords**

```
aaa new-model
aaa authentication login neteng local
username joe secret 5 $1$j6Ac$3KarJszBV3VMaL/2Nio3E.
username jim secret 5 $1$LPV2$Q04NwAudy0/4AHHHQHvWj0
line vty 0 4
  login neteng
  access-class 3 in
```

User Authentication

- Use centralised authentication system

RADIUS (not recommended for system security)

TACACS+

```
aaa new-model
aaa authentication login default tacacs+ enable
aaa authentication enable default tacacs+ enable
aaa accounting exec start-stop tacacs+
ip tacacs source-interface Loopback0
tacacs-server host 215.17.1.1
tacacs-server host 215.17.5.35
tacacs-server key CKr3t#
line vty 0 4
  access-class 3 in
```

User Authentication

TACACS+ Provides a detailed audit trail of what is happening on the network devices.

User-Name	Group-Name	cmd	priv-lvl	service	NAS-Portname	task_id	NAS-IP-	reason
bgreene	NOC	enable <cr>	0	shell	tty0	4	210.210.51.224	
bgreene	NOC	exit <cr>	0	shell	tty0	5	210.210.51.224	
bgreene	NOC	no aaa accounting exec Worksho	0	shell	tty0	6	210.210.51.224	
bgreene	NOC	exit <cr>	0	shell	tty0	8	210.210.51.224	
pfs	NOC	enable <cr>	0	shell	tty0	11	210.210.51.224	
pfs	NOC	exit <cr>	0	shell	tty0	12	210.210.51.224	
bgreene	NOC	enable <cr>	0	shell	tty0	14	210.210.51.224	
bgreene	NOC	show accounting <cr>	15	shell	tty0	16	210.210.51.224	
bgreene	NOC	write terminal <cr>	15	shell	tty0	17	210.210.51.224	
bgreene	NOC	configure <cr>	15	shell	tty0	18	210.210.51.224	
bgreene	NOC	exit <cr>	0	shell	tty0	20	210.210.51.224	
bgreene	NOC	write terminal <cr>	15	shell	tty0	21	210.210.51.224	
bgreene	NOC	configure <cr>	15	shell	tty0	22	210.210.51.224	
bgreene	NOC	aaa new-model <cr>	15	shell	tty0	23	210.210.51.224	
bgreene	NOC	aaa authorization commands 0 de	15	shell	tty0	24	210.210.51.224	
bgreene	NOC	exit <cr>	0	shell	tty0	25	210.210.51.224	
bgreene	NOC	ping <cr>	15	shell	tty0	32	210.210.51.224	
bgreene	NOC	show running-config <cr>	15	shell	tty66	35	210.210.51.224	
bgreene	NOC	router ospf 210 <cr>	15	shell	tty66	45	210.210.51.224	
bgreene	NOC	debug ip ospf events <cr>	15	shell	tty66	46	210.210.51.224	

Securing the Network

Ingress and Egress Route Filtering

- **There are routes that should NOT be routed on the Internet**
 - RFC 1918 and “Martian” Networks**
 - 127.0.0.0/8 and Multicast blocks**
 - See <ftp://ftp.ietf.org/internet-drafts/draft-manning-dsua-08.txt> and RFC3330 for background information
- **Check Rob Thomas’ list of “bogons”**
 - <http://www.cymru.org/Documents/bogon-list.html>
- **BGP should have filters applied so that these routes are not advertised to or propagated through the Internet**

Ingress and Egress Route Filtering

BGP Configuration

```
router bgp 200
no synchronization
bgp dampening
neighbor 220.220.4.1 remote-as 210
neighbor 220.220.4.1 version 4
neighbor 220.220.4.1 prefix-list rfc1918-sua in
neighbor 220.220.4.1 prefix-list rfc1918-sua out
neighbor 222.222.8.1 remote-as 220
neighbor 222.222.8.1 version 4
neighbor 222.222.8.1 prefix-list rfc1918-sua in
neighbor 222.222.8.1 prefix-list rfc1918-sua out
no auto-summary
!
```

Ingress and Egress Route Filtering

Cisco.com

Prefix List

```
ip prefix-list rfc1918-sua deny 0.0.0.0/8 le 32
ip prefix-list rfc1918-sua deny 10.0.0.0/8 le 32
ip prefix-list rfc1918-sua deny 127.0.0.0/8 le 32
ip prefix-list rfc1918-sua deny 169.254.0.0/16 le 32
ip prefix-list rfc1918-sua deny 172.16.0.0/12 le 32
ip prefix-list rfc1918-sua deny 192.0.2.0.0/24 le 32
ip prefix-list rfc1918-sua deny 192.168.0.0/16 le 32
ip prefix-list rfc1918-sua deny 224.0.0.0/3 le 32
ip prefix-list rfc1918-sua permit 0.0.0.0/0 le 32
```

Ingress & Egress Route Filtering

Cisco.com

Your customers should not be sending *any* IP packets out to the Internet with a source address other than the address you have allocated to them!

Ingress & Egress Packet Filtering

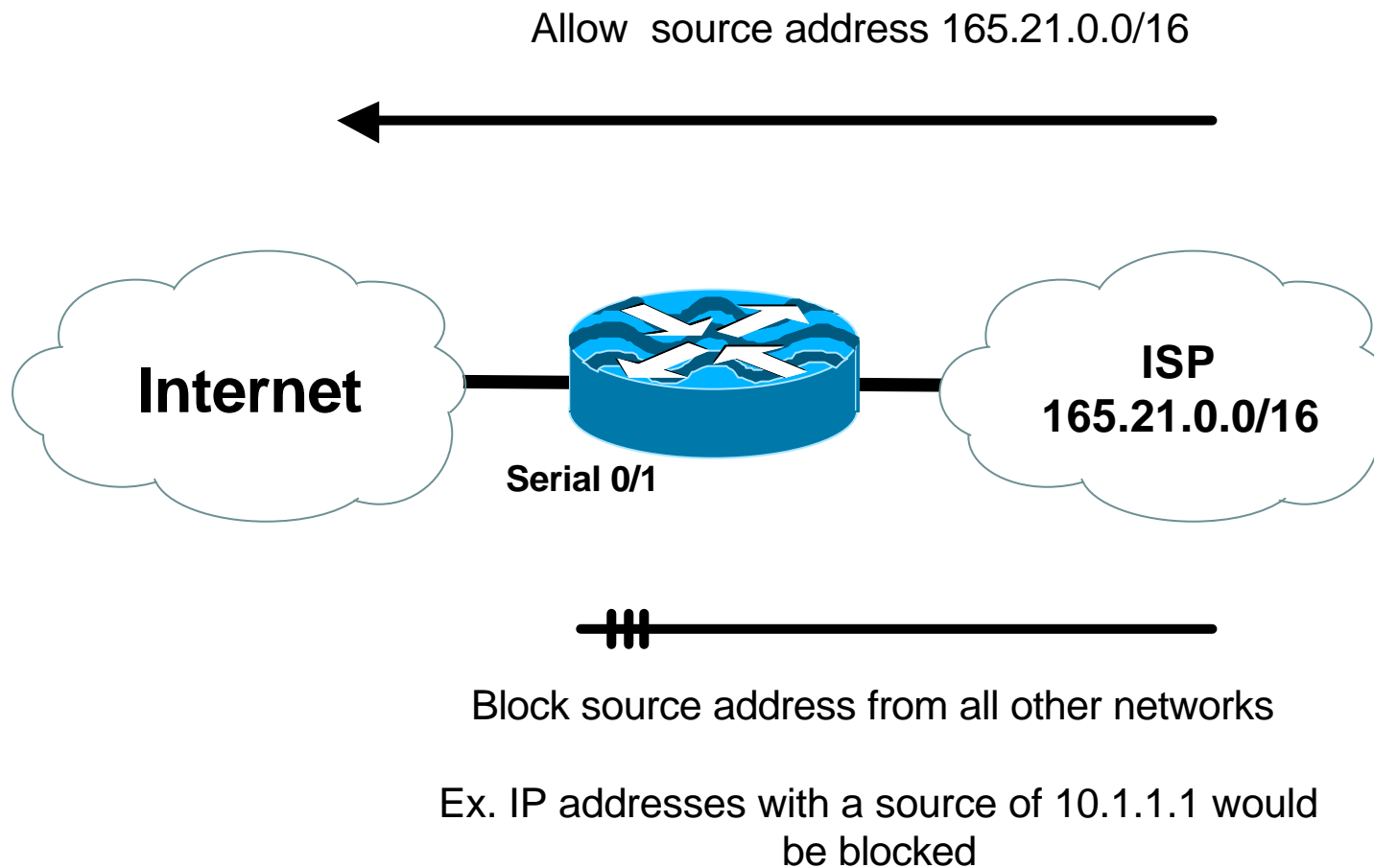
Cisco.com

- **BCP 38/ RFC 2827**
- **Title: Network Ingress Filtering: Defeating Denial of Service Attacks which employ IP Source Address Spoofing**
- **Author(s): P. Ferguson, D. Senie**

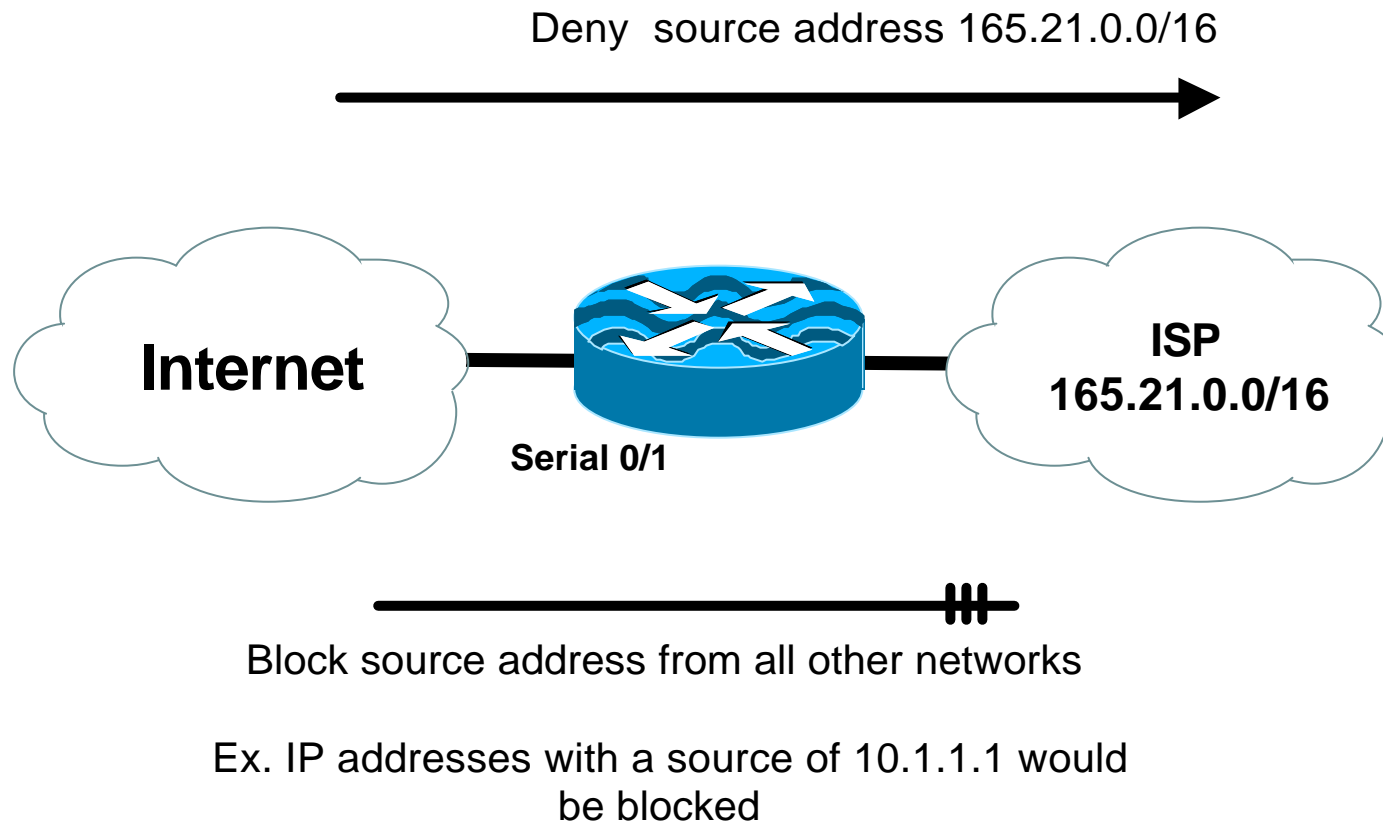
Packet Filtering

- **Static Access List on the edge of the Network.**
- **Dynamic Access List with AAA Profiles**
- **Unicast RPF**

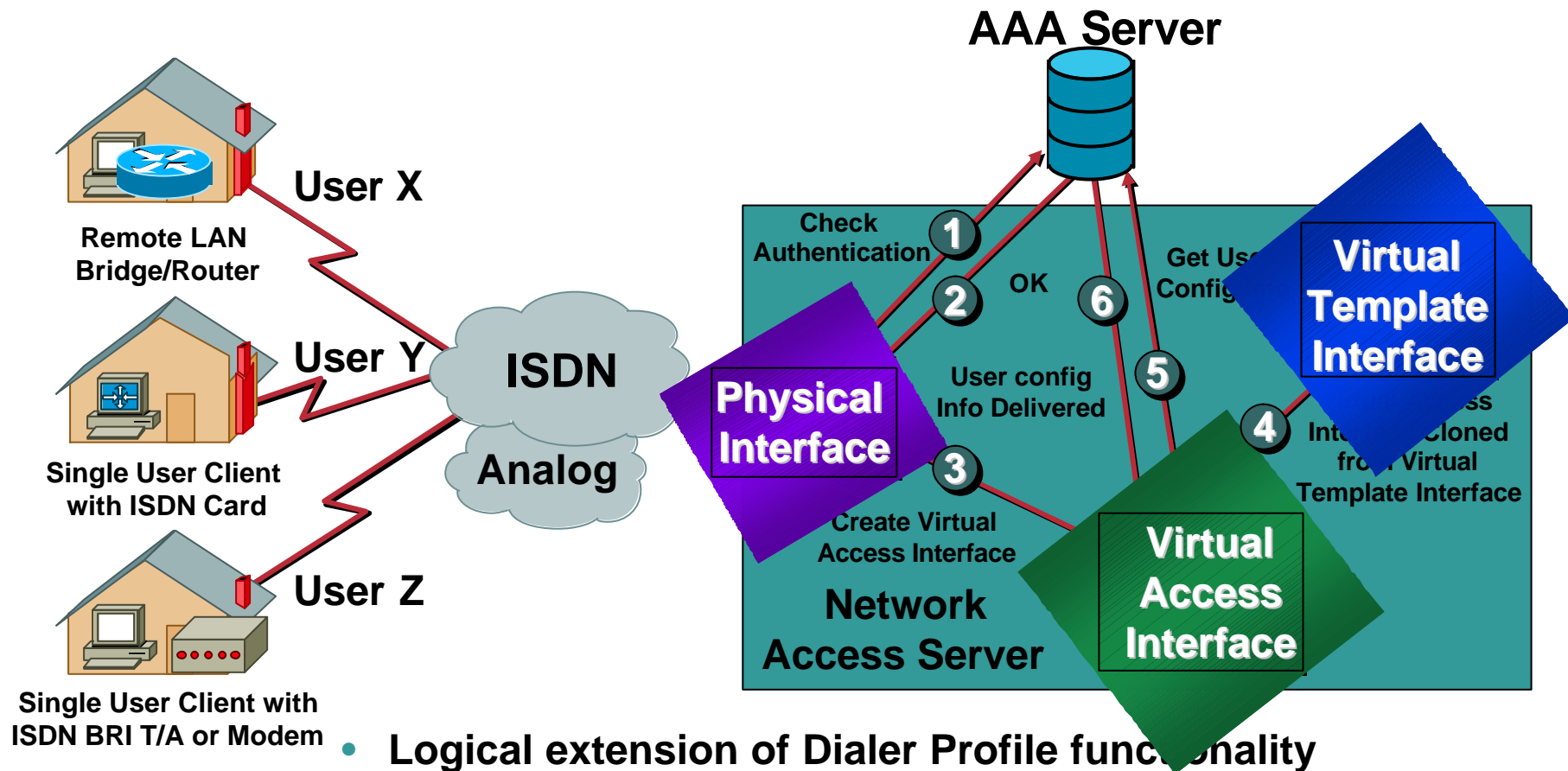
Outbound Packet Filtering



Inbound Packet Filtering



Dynamic ACLs with AAA Virtual Profiles



- Logical extension of Dialer Profile functionality
- ACLs stored in the Central AAA Server
- Supports both Radius and Tacacs+

Reverse Path Forwarding

- **Supported from 11.1(17)CC images**
- **CEF switching must be enabled**
- **Source IP packets are checked to ensure that the route back to the source uses the same interface**
- **Thought/planning required in multihoming situations**

Reverse Path Forwarding

- **IOS Command**

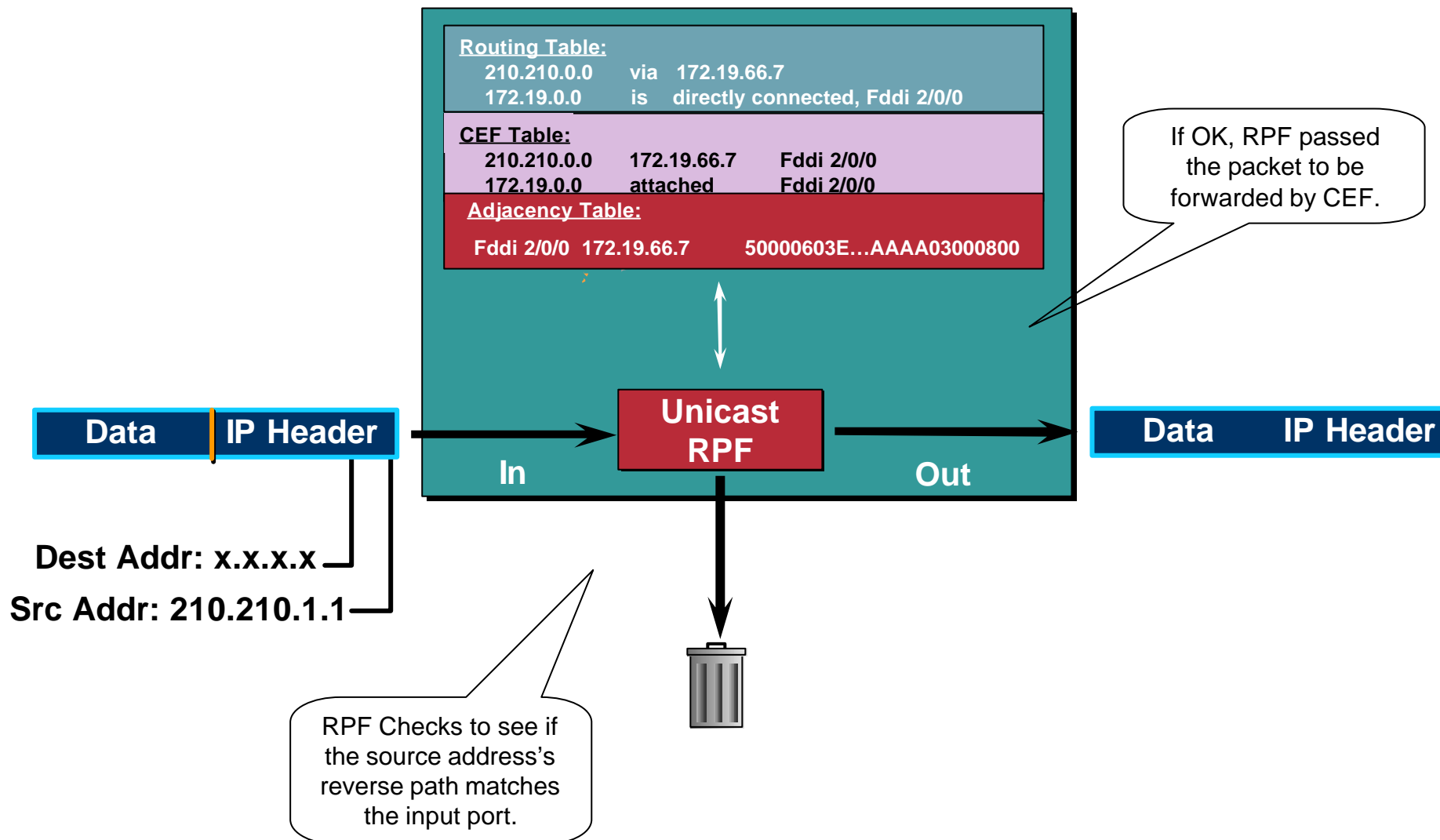
```
interface serial 1/0  
  ip verify unicast reverse-path <acl>
```

- **Access-list has two uses**

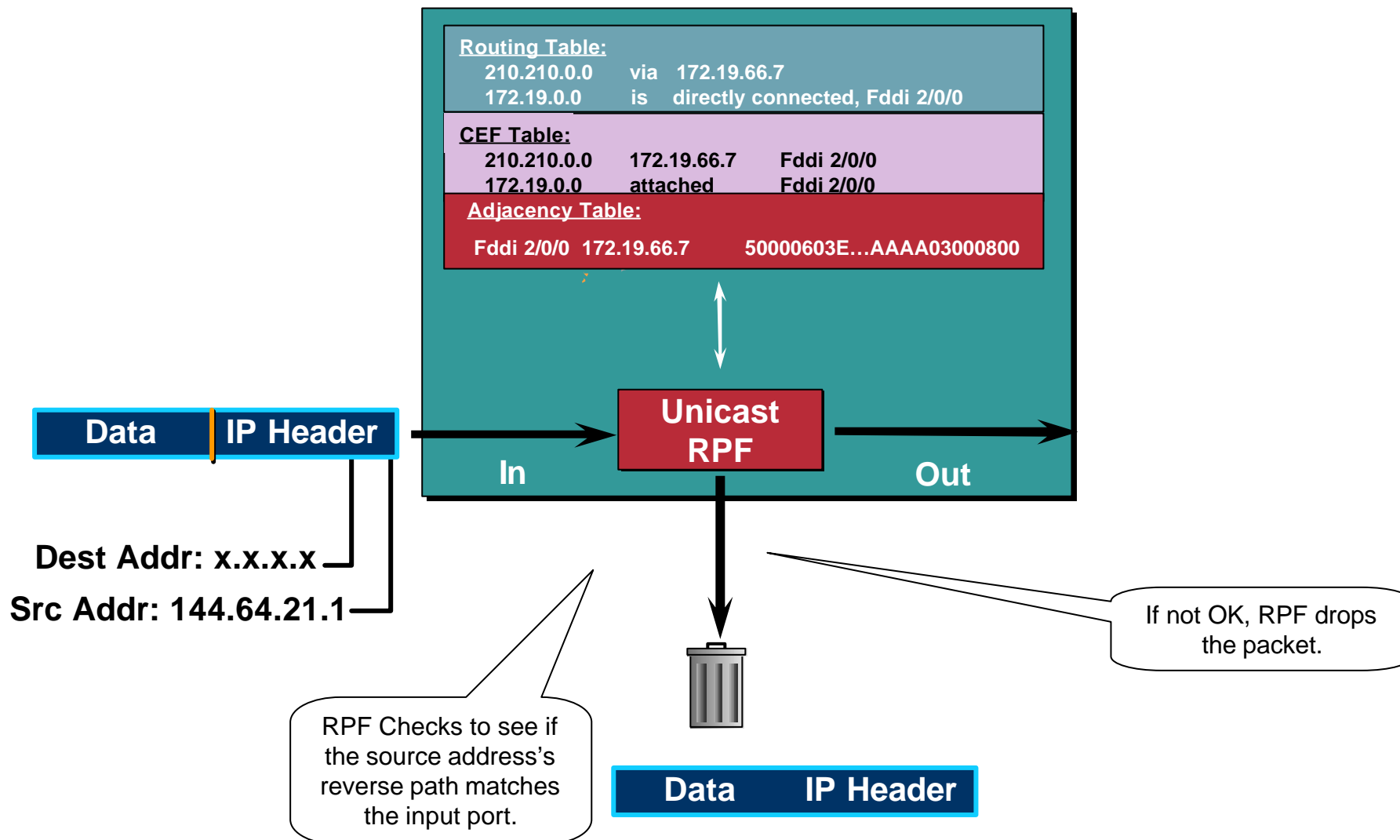
**To allow prefixes which have failed the uRPF test
(access-list permit statement)**

To log uRPF failures (access-list deny log statement)

CEF Unicast RPF



CEF Unicast RPF



Unicast RPF Check

- **Should be mandatory command on all ISP's edge routers connecting customers to the Internet**

Part of IOS Essentials ISP router template

- **Multihomed customers require a little more thought and planning**

Use BGP weight

Use uRPF enhancements (ACL and FIB comparison) in 12.0(14)S

```
ip verify unicast reverse-path <acl>
```

```
ip verify unicast source reachable-via [any|rx] <acl>
```

Description of “Smurfing”

Cisco.com



- Smurf is **Denial of Service** attack

Network-based, fills access pipes

Uses ICMP echo/reply packets with broadcast networks to multiply traffic

Requires the ability to send spoofed packets

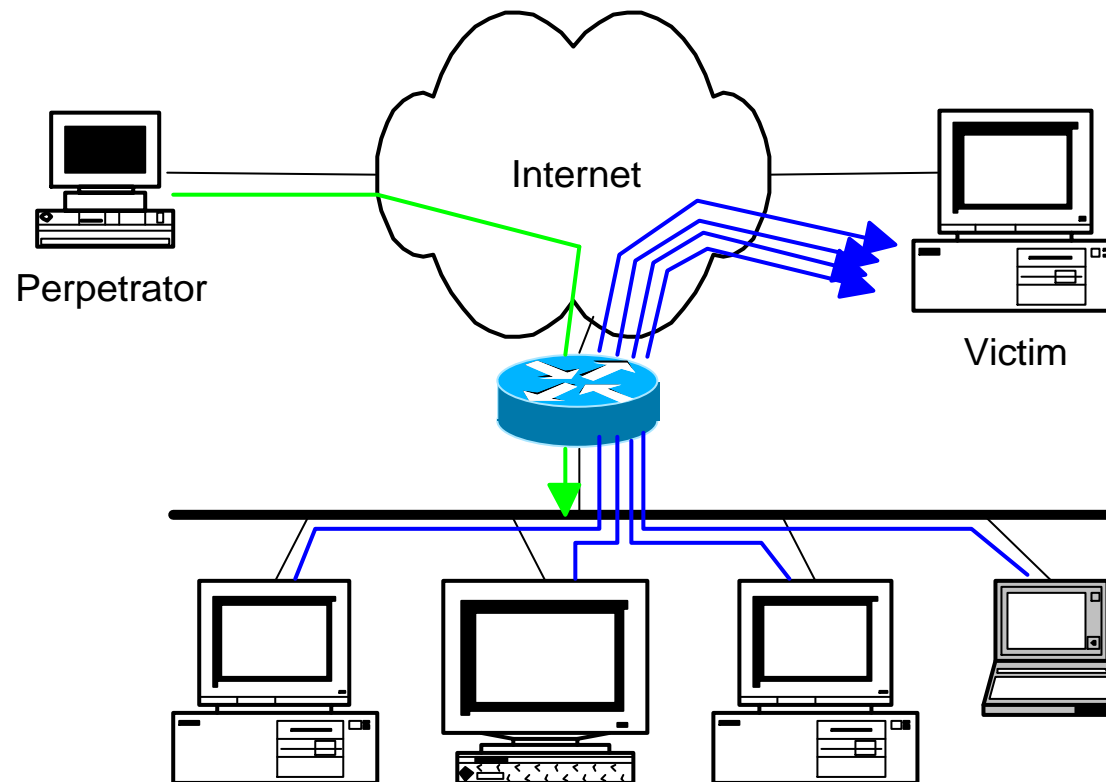
Would hardly exist if ISPs used uRPF checks and disabled directed-broadcast on LANs

- Abuses “bounce-sites” to attack victims

Traffic multiplied by a factor of 50 to 200

Description of “Smurfing”

- ICMP echo (spoofed source address of victim)
Sent to IP broadcast address
- ICMP echo reply



Multiplied Bandwidth – Example

- **Perpetrator has T1 bandwidth available (typically a cracked account), and uses half of it (768 Kbps) to send spoofed packets, half to bounce site 1, half to bounce site 2**
- **Bounce site 1 has a switched co-location network of 80 hosts and T3 connection to net**
- **Bounce site 2 has a switched co-location network of 100 hosts and T3 connection to net**

Multiplied Bandwidth – Consequences

Cisco.com

- **(384 Kbps * 80 hosts) = 30 Mbps outbound traffic for bounce site 1**
- **(384 Kbps * 100 hosts) = 37.5 Mbps outbound traffic for bounce site 2**
- **Victim is pounded with 67.5 Mbps (!) from half a T1!**

Profiles of Participants

- **Typical Perpetrators**

- Cracked superuser account on well-connected enterprise network
 - Superuser account on university residence hall network (Ethernet)
 - Typical PPP dial-up account (for smaller targets)

- **Typical Bounce Sites**

- Large co-location subnets
 - Large switched enterprise subnets
 - Typically scanned for large numbers of responding hosts

- **Typical Victims**

- IRC Users, Operators, and Servers
 - Providers who eliminate troublesome users' accounts

Prevention Techniques

- **How to prevent your network from being the source of the attack:**

Apply filters to each customer network

Ingress: Allow only those packets with source addresses within the customer's assigned netblocks

Apply filters to your upstreams

Egress: Allow only those packets with source addresses within your netblocks to protect others

Ingress: Deny those packets with source addresses within your netblocks to protect yourself

Prevention Techniques

- **Filters will also prevent other forms of attacks as well**
- **If you do become a bounce site:**
 - Trace the traffic streams to the edge of your network, and work with your upstream or peer in order to track the stream further**
 - MCI's DoSTracker tool**
 - Manual tracing/logging tips**

Prevention Techniques

- **How to suppress an attack if you're the victim:**

Implement ACL's at network edges to block ICMP echo responses to your high-visibility hosts, such as IRC servers

Will impair troubleshooting -- "ping" breaks

Will still allow your access pipes to fill

Work with upstream providers to determine the help they can provide to you

Blocking ICMP echoes for high-visibility hosts from coming through your access pipes

Tracing attacks

Prevention Techniques

- **CSCdj35407 – “fast drop” ACL code**

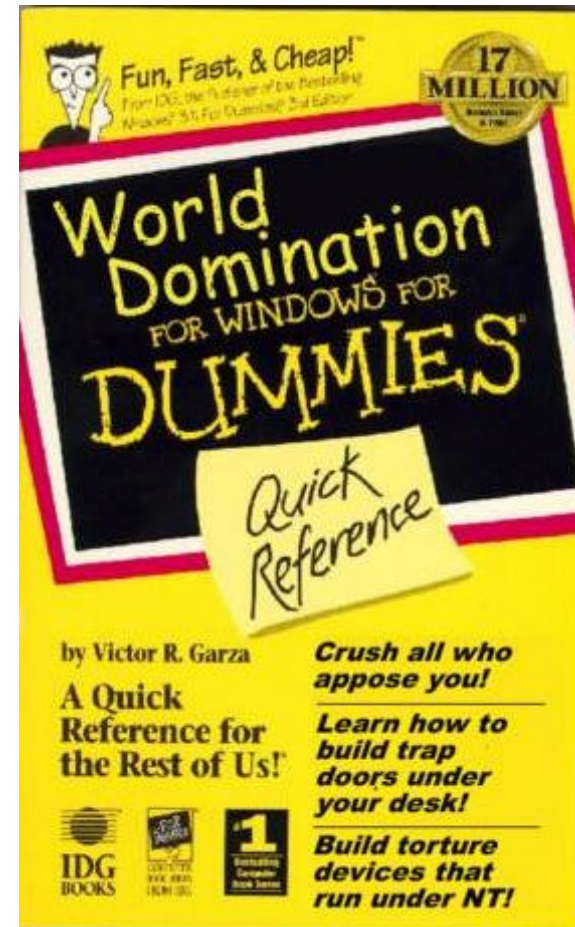
This feature optimizes the way that packets denied by an ACL are dropped within IOS, reducing CPU utilization for large amounts of denied traffic

- **CSCdj35856 – ACL logging throttles**

This feature places a throttle in IOS which will allow a user to specify the rate at which logging will take place of packets which match a condition in an ACL where “log” or “log-input” is specified

DDoS versus DoS

- Same methods and tools as DoS
- Much larger scale attacks
 - Elephant hunting
- Uses hundreds or even thousands of attacking points to overwhelm targets
- Very difficult to determine difference between DDoS and network outage



DDoS Links

- <http://www.denialinfo.com/>
- <http://www.staff.washington.edu/dittrich>
- <http://www.sans.org/y2k/DDoS.htm>
- <http://www.nanog.org/mtg-9910/robert.html>
- <http://cve.mitre.org/>

More Information?

Where to get more information

Cisco.com

- **Supporting *Cisco ISP Essentials* Book**

`http://www.ispbook.com`

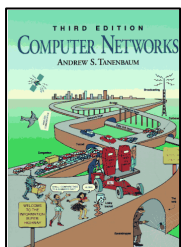
- **Check the CTO Consulting Engineering ISP Resources page:**

`ftp://ftp-eng.cisco.com/cons/`

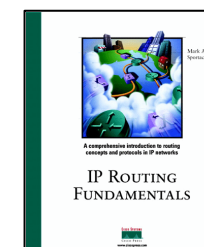
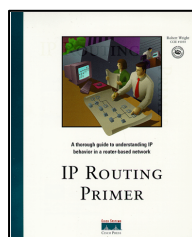
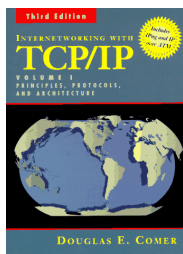
- **Join the cisco-nsp mailing list – set up by ISPs for ISPs**

send e-mail to `majordomo@puck.nether.net` with the words "subscribe cisco-nsp" in the body

For Further Reference...

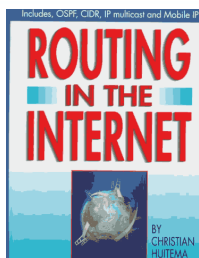


- **Computer Networks, Third Edition**
by Andrew Tanenbaum (ISBN: 0-13349-945-6)
- **Interconnections : Bridges and Routers (second Ed)**
by Radia Perlman (ISBN: 0-20163-448-1)
- **Internetworking with TCP / IP, Volume 1: Principles, Protocols, and Architecture**
by Douglas Comer (ISBN: 0-13216-987-8)
- **IP Routing Fundamentals**
by Mark Sportack (ISBN: 1-57870-071-x)
- **IP Routing Primer**
by Robert Wright (ISBN: 1-57870-108-2)

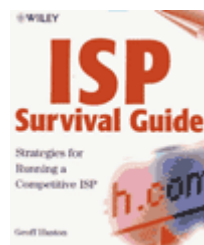
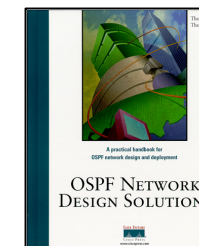


For Further Reference...

Cisco.com



- **Routing in the Internet**
by Christian Huitema (ISBN: 0-13132-192-7)
- **OSPF Network Design Solutions**
by Thomas, Thomas M. (ISBN: 1-57870-046-9)
- **ISP Survival Guide : Strategies for Running a Competitive ISP**
by Geoff Huston (ISBN:0-47131-499-4)
- **Internet Routing Architectures: 2nd Edition**
by Sam Halabi & Danny Mcpherson
- **Cisco ISP Essentials**
by Barry Greene & Philip Smith



IOS Essentials

Essential Features every ISP should Consider

Version 3.0alpha